

OUR MISSION:
to follow Jesus
in every way



CHURCH PROFILE **for Christ Church, Chineham, Basingstoke**



***Helping you decide whether you're the right
person to join us as
YOUTH & FAMILIES LEADER***

We hope so!

(some of us at Soul Survivor 2019)



Introduction

Thank you for checking out our vacancy for a **Youth & Families Leader** to work as part of team serving with us in Chineham, a suburb of Basingstoke. This short guide should help give you a flavour of us and our life together. You'll also be checking out our website, won't you? It includes a short [video overview](#).

Please know that we are praying that God would lead the right person to us, and that we would recognise them.

Youth and Children's ministries have always been a significant aspect of church life, and for many years that has included a full time Youthwork Leader, and more recently a part-time Children & Families Leader as well. The two roles have always worked closely together, supporting one another, particularly with bigger events.

This guide is about us: the other documents are about you.

The Vision of Christ Church

The Church has a vision statement *to follow Jesus in every way*. This expresses our desire as a church to model our life together on the Lord Jesus Christ with the core values of *prayer, worship, Bible study, evangelism and love*. In this we seek to follow him as his disciples, to draw others to him and in all things to bring honour to God the Father, Son and Holy Spirit. To help us in this we have five aims.

1. To be committed to our corporate life together, undergirding all we do with prayer.
2. To give priority to our personal spiritual growth as Christians.
3. To reach out into the community with the message of personal salvation in Jesus Christ.
4. To show the love of God in practical care within and beyond the church.
5. To best use all the resources God has given us in His service.

For over thirty years Christ Church has provided a lively, evangelical, family centred environment and outward looking church with membership ranging from babies to the elderly. From the beginning we have been an ecumenical church (a congregation of Anglicans, Baptists, Methodists and United Reformists), and have active links with other churches in showing the love of Jesus to the world. We are conscious of the prayer of Jesus *'may they all be one... that the world will believe you sent me...'* (John 17.21) and the injunction to *'spare no effort to make fast with bonds of peace the unity which the Spirit gives'* (Ephesians 4:3).

What are we like? *You will find us ...*

Ecumenical, diverse & growing

Most unusually, Christ Church is formally a combination of C of E, Methodist and URC churches, and more latterly Baptist too. As an "Ecumenical Partnership" we could have a very different feel each week, with different denominations leading. Not so Christ Church. We are one happy family that respects our different backgrounds, emphasising that we "welcome people of all denominations and none". In practice it means that we sit light to the rules or traditions of any particular church, instead drawing on the best of all of them.

As we have grown in recent years we've become more culturally diverse, with members from South Africa, Cameroon, Nigeria, Philippines, Hong Kong, France as well as the UK. The membership roll (almost the same as our electoral roll) is 125, and most opt to enrol as 'ecumenical' rather than as a specific denomination. We also regularly see another 55 adults and 50 U18s in our Sunday 'community of worship', and have a 'fringe' of another 100 or so adults and children who we see at Messy Church or other events we put on.

All in all, Christ Church is *very* special family, and a foretaste of heaven!

Informal & friendly

We're informal, both in our services and broad range of activities, giving priority to relationships over structures and reputation. Faith is seen as being related to the whole of life. This is reflected in a light-handed, but clear style of leadership by the ministers and the lay leadership. In this environment of guidance and encouragement lay leadership has flourished. In all activities lay leadership is either assisting or to the fore.

Welcoming & accessible

With a modern building, we're able to be more physically accessible, with level access, disabled toilet, and automatic doors. We're trying to become more accessible to people with special or additional needs in services and events, with some Makaton signing of songs, and we're learning how to support people with hidden needs, including autism and dementia.



(the church's main entrance)

Focused on young people and their families

We enjoy the life and noise of children and youth, and try hard to make them all feel welcome.



(Setting up for mid-week Sparklers)



(Our well-loved pre-schoolers area on a Sunday)

Youth and Children's ministries have always been a significant aspect of church life, and for many years that has included a full time Youthwork Leader, and more recently a part-time Children & Families Leader as well. They work directly with the youth and children, and their families, and encouraging, training and equipping teams of volunteers too.

Recently our **youth work** has included weekly groups on Sunday mornings for ages 10-18, fortnightly Sunday evening youth group, a weekly youth homegroup, termly big "B:united" youth events (see below), and yearly trips to Soul

Survivor. Increasingly this has been in collaboration with other youth workers in Basingstoke. Our recently-departed youth worker started breakfast youth worker gatherings, and helped organise and lead the "b:united" youth events -- teaching, worship, tuck shop, prayer stations etc. We are looking to expand this with joint work in local secondary schools, which after many years of keeping the churches away, are beginning to show signs of opening up.

Our **children's work** is expanding, with two Sparklers sessions a week for pre-school children and their parents/carers, Sunday morning groups from Creche to age 10, Messy Church, Open the Book in most local primary schools, plus various assemblies, Prayer Spaces and other lessons at one of our two schools in the parish.





As well as some of the above, our **family work** has included parenting courses, and a recently-started 'Faith in Families' lunch where we serve Sunday lunch to our families, giving us an opportunity to discuss our work and plans with parents, and how things are going with their role disciplining their children most of the week.



A Faith in Families lunch

We are very strong on safeguarding, and thankfully have a very efficient DBS administrator.

Sociable & hungry

Most people hang around after services for quite a long time, enjoying refreshments, talking and/or praying:



We do rather more than just that, though. In recent months, we've had a Big BBQ for church family and friends, welcome lunches for newcomers, and a farewell lunch for our departed Youth Leader. We use our excellent kitchen (shown with our previous Youth Leader) for events at Lent, Easter, Harvest, and around Christmas too.



We also have regular breakfast events for men and women (and sometimes together) with guest speakers, which are partly social, but normally include an element of outreach or Christian discipleship.

Prayerful

Prayer has always been crucial to the life of the church. We have found that when prayer flags, so too does the flame of faith diminish. We have weekly evening prayer meetings, and morning prayer each Wednesday, timed to suit the school run. We have a prayer team for confidential prayer requests, to supplement our public list. After the 10.30 service a prayer ministry team is available to individuals.

Worshipping

We love singing together, particularly supported by our worship bands at our 10.30am services. Young people and those new to performing music, are encouraged to join the worship group. Watching people grow in confidence and ability is a joy to all. Sometimes we get flags out, and not just because it makes for a colourful picture:



(You don't have to enjoy waving flags, though.)

We know that worship isn't just something for Sundays. "When the service finishes the worship begins."

Evangelical

The church stands firmly within the evangelical tradition. This is reflected in the strong tradition of expository biblical teaching and preaching together with a relaxed, informal and contemporary style. Doctrine is biblically based:

- The supreme authority of the Bible in all matters of life and faith.
- The substitutionary atonement of our Lord Jesus Christ upon the cross.

In this, Christ Church brings Christians together from a wide range of backgrounds and denominations.

Gathering around the Bible

The Bible, biblical teaching and preaching are central to the life of the church. Sermons are expository and follow a set themed programme, mostly following a biblical book in whole or in part, but also including thematic sermons on subjects such as work or contemporary challenges. Expository preaching has been central to the growth of the church and the preaching is of a high quality. Sermons are normally recorded and available on the website.

The church currently has 9 home groups. These are Bible study, prayer and fellowship groups that often meet in members' homes, sometimes during the day but mostly in an evening. Many of the adult membership and young people of the church are members of homegroups. There is a good deal of flexibility for groups though usually the church leadership provides study notes, often, though not exclusively, tracking the sermon series.

In recent years we have run Alpha and Christianity Explored courses, and we have seen a steady flow of new Christians from them. Other discipleship courses which have been undertaken include Listening, "Lifeshapes" and Bible overview courses.

Reaching out in Mission

We are active in social care, especially through what our members do on church premises for young families and the retired. This currently includes:

Coffee & Co	Quality cake and coffee, serving 35-40 largely mums and babies; runs once a week at the same time as a post-natal clinic.
Sparklers	Bi-weekly, a group for pre-school children and their parents/carers.
123 Matinee Group	Monthly, 25-40 people attend; for social, relationship and support building.
Luncheon Club	Monthly, for people from the community, 25 – 40 with 50+ at Christmas.
Hands-Up: Puppets4Jesus	Youth activity, performing in Christ Church and occasionally other venues. (Currently in abeyance, but we have all the puppets!)
Open the Book	Weekly assemblies to one infant school and one primary school.
Junior School Assemblies	Taken by the Children & Families Leader and Lead Minister.



Many members are also involved in local ecumenical initiatives, some coordinated by OneChurch Basingstoke, including Youth Café (hosted at London Street URC), Basingstoke Street Pastors, Town Chaplaincy, Debt Advice, and other *Open the Book* teams.

Evangelism has been preached, taught and discussed in Council, but in direct evangelism - spreading the gospel by proclaiming the good news of Jesus Christ - the church could be very much more involved, like many, many churches. The model set by the Apostles in dealing with the expanding church – they delegated pastoral work, whilst they focussed on prayer and ministry of the word (Acts 6:3,4.) – is seen as a good model to follow.

Caring for one another

Pastoral care is vital for the church family. Pastoral care is exercised through a ministry of welcome to new members/worshippers, home groups, church activities such as the monthly luncheon club and mother-and-baby group (Sparklers), plus individual pastoral care.

Supporting world mission

We tithe 10% of our received giving which results in about £14,000 per annum being available for mission support at home and overseas. There is a mission partnership group which oversees the various links which the church has and which raises their profile within the church, in particular in enabling effective and focussed prayer to take place. The groups supported range from mission agencies to particular projects both overseas and locally.

Eco-minded

Not many churches have these awards:



This shows our commitment to recycling with regular swap shop for toys, books, clothes and plants, and as far as possible we shop ethically, and reduce our plastic consumption and CO2 emissions. We also support the Basingstoke Green week. But we're not resting on our laurels, as we're now working towards a Gold award.

Generous

Many church members are generous with their time, their gifts and their money. One reason the church has expanded from small beginnings is that many people give their time to Christ Church to run and assist activities across the spectrum of young/old, spiritual/social. Christ Church is fortunate that its members encompass many gifts that have been given freely. Similarly, people have been generous with their money, enabling support services to be expanded and the church building to be maintained and enlarged. People have responded generously when the vision and needs are clearly explained, and when they are seen to align with God's vision.

An example of this is the construction of a major extension to the building, completed at Christmas 2003. Costing £1.1m, this has equipped the church with a purpose-built worship area for 200 seated people, including a baptistery for full immersion baptisms, welcome area, prayer room, hall, offices, kitchen and extensive meeting rooms. These facilities are widely used by a range of church, community and local business groups. Through The Lord's gracious blessing this has been paid for in full.

Our Regular Services

Overview

Christ Church does not possess robes. Surplices and collars are not worn at any of these services, unless preferred by visiting clergy. The church does not use 'altar cloths'. The Communion Table is polished light oak and is usually without a covering, though often at Communion a narrow white cloth is used.

Whilst having an informal approach, the breaking of bread, the rite of baptism, etc. is seen as being a fundamental expression of our Christian faith.

Sundays

At 9am each Sunday around 30 people attend for either Morning Prayer or Holy Communion, following service patterns drawn from our various denominations. The sermon is usually the same as at the following service. We sing hymns and some songs, accompanied by piano. Although this service is more reflective, it's conducted in a relaxed and informal style by the minister.

At 10.30am a contemporary preaching and worship service takes place with an attendance of around 120 adults and children. Generally these informal services last an hour and a half, and are based around a broad framework which might include liturgical material from various sources, personal testimony, prayer ministry and usually a significant expository sermon. About once a month we share Holy Communion, open to all ages. The music is provided by a band and although a variety of songs are used the emphasis is on modern, contemporary music, using the overhead screen for the words. Prayer ministry is offered afterwards. Usually the children and youth leave part-way through this service for their own age-related activities, but about once every 6 weeks we all stay together for a shorter service that includes opportunity for all to respond in different ways (make/chat/listen/read/think/colour).

Messy church

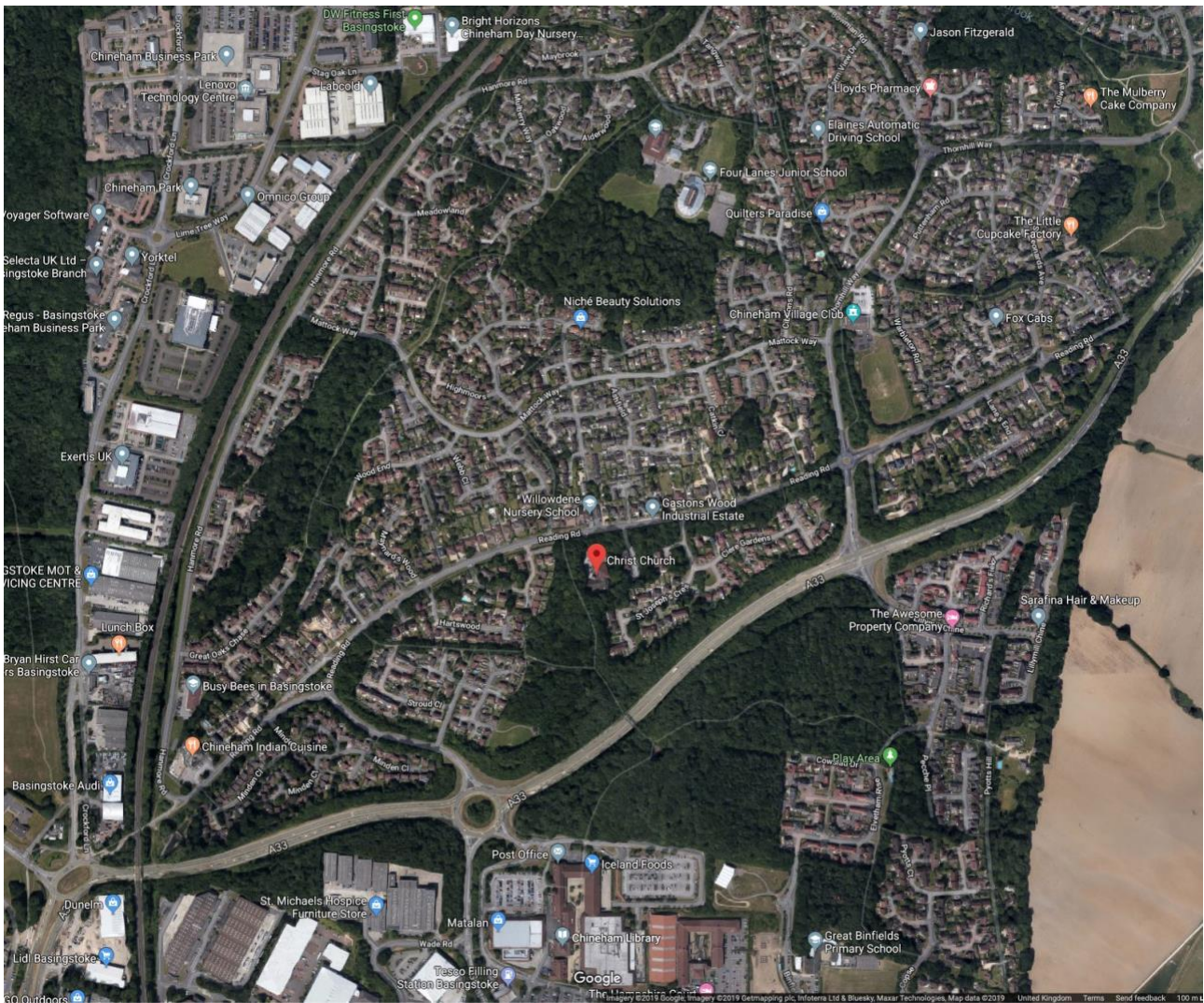
Messy Church is a regular service which takes place once a month on a Monday, 3.45 pm to 5.45pm. Anywhere from 40 to 80 adults and children attend.

Midweek Communion

The fourth regular service is a simple and informal Communion Service before the monthly Luncheon Club attended by 10-15 mostly older, people.

A little about Chineham

Chineham may not be famous, but it's surprisingly friendly, and with paths winding between the houses and many green areas, play areas and copses, and nearby shopping centre, it's a great place to live.



The parish occupies a residential suburban area to the north east of Basingstoke, partly astride the road to Reading/M4. Rural small-scale strip development started between the two world wars, and then building in the 1980s, of the Chineham as we now know it, started in earnest. This development is now complete in Chineham, but the extension of this development has overflowed the Church of England parish boundary into Sherfield-on-Loddon, and this is still progressing. The population is predominantly families, with children and youth numbers being greater than retired people. Chineham has a population of about 10,000 with 130 new houses in the process of construction. There are two primary school sites in the parish (both county schools) with which the church has links, and where ministers and church members take assemblies on a regular and frequent basis.

The housing is primarily owner-occupier, with some rentable accommodation and some areas of social housing. Major areas of employment are IT, finance, financial services, business and commerce, and other professionals. There are strong community networks in the area and the church enjoys good links with local Councillors. Chineham is close to the M3, M4, and rail links to much of the South via Basingstoke. A major hospital is only 5 minutes' drive away. Generally, the schools, the hospital, shopping and cultural activities are regarded as being good to very good.

The rural landscape around Basingstoke has different terrains on all four points of the compass, with many interesting and varied villages and walks.

Appendix: Other details you might (or might not) be interested in

Employed Staff (see the website for latest mugshots)

Jonathan Clark -- Lead Minister (full time)

Responsible for the ministry and mission at Christ Church, particularly leading the preaching and leading teams, chairing the Church Council, pastoring leaders of the various ministry areas, and overseeing the staff. He's an Evangelical by conviction, an Anglican by training, and Ecumenical in practice!

YOU? – our next Youth & Families Leader

Responsible for organising, overseeing and being involved in the work with 10-21 year olds and their families; working with, and encouraging, volunteer teams. This work is both within CCC and reaching out to young people locally, in schools and with neighbouring churches to bring youth together and to hear the Gospel of Jesus.

Katy Lowe - Children & Families Leader (22 hours a week)

Responsible for organising, overseeing and being involved in the work with 0-10 year olds; working with, and encouraging, volunteer teams. This work is both within Christ Church and reaching out to young people locally, in schools and with neighbouring churches to bring children together and to hear the Gospel of Jesus.

Vacancy - Children & Families Leader (7 hours a week)

Responsible for helping Katy with our work with 0-10 year olds, particularly at our midweek Sparklers groups.

Gill Godfrey – Administrator (3 days a week)

Responsible for the administrative functioning of the parish (service sheets, rotas, activity days, etc), and the letting of the building to hirers.

NB: The church office is staffed five days a week, with help from volunteers.

Gillian Baker - Facilities Co-ordinator (2 mornings a week)

Responsible for keeping our wonderful facilities working well and looking good. Much of this comes from routine maintenance of the building and its plant. Also responsible for Health & Safety.

Brian Walker – Caretaker (8 hours a week)

Assists the Administrator in performing the caretaker functions of the routine maintenance and activities of, in and around the building.

Hayley Bedford – Cleaner (Sat mornings)

Helps us keep everything in great condition. She is supplemented by some contract cleaners.

Our Ecumenical Ministers

Lead Minister (Anglican)	Rev Jonathan Clark – living in Chineham with his wife and “graceful greyhound Gracie” since mid-2018. A lover of coffee, gadgets, jazz, God called him into ministry after nearly 20 years as a Systems Engineer and techie. He loves to live in a place with so many trees.
Baptist	Rev Michael Banfield (retired) – living nearby, and a full-time member at Christ Church, with his wife.
Methodist	Rev Valerie Fisher – retired, but still serving the Reading Circuit each week.

URC

Rev Kay Blackwell – full-time Minister to London Street URC in the centre of Basingstoke and Old Meeting URC in Tadley.

Contact details

www.christchurchineham.org.uk

Reading Road, Chineham, Basingstoke, RG24 8LT / 01256 474280

Charity registration No. 1142640

Photos courtesy Gareth Rowlands, Ruth Hutchings and Jonathan Clark.

22.10.2019